



WELCOME

5th Avenue Pedestrian Safety Improvement Project

Project No.: 0421102/CFHWY00856

Highway Safety Improvement Program: 5th Avenue
Concrete Street to Karluk Street Pedestrian Improvements



PLEASE SIGN IN

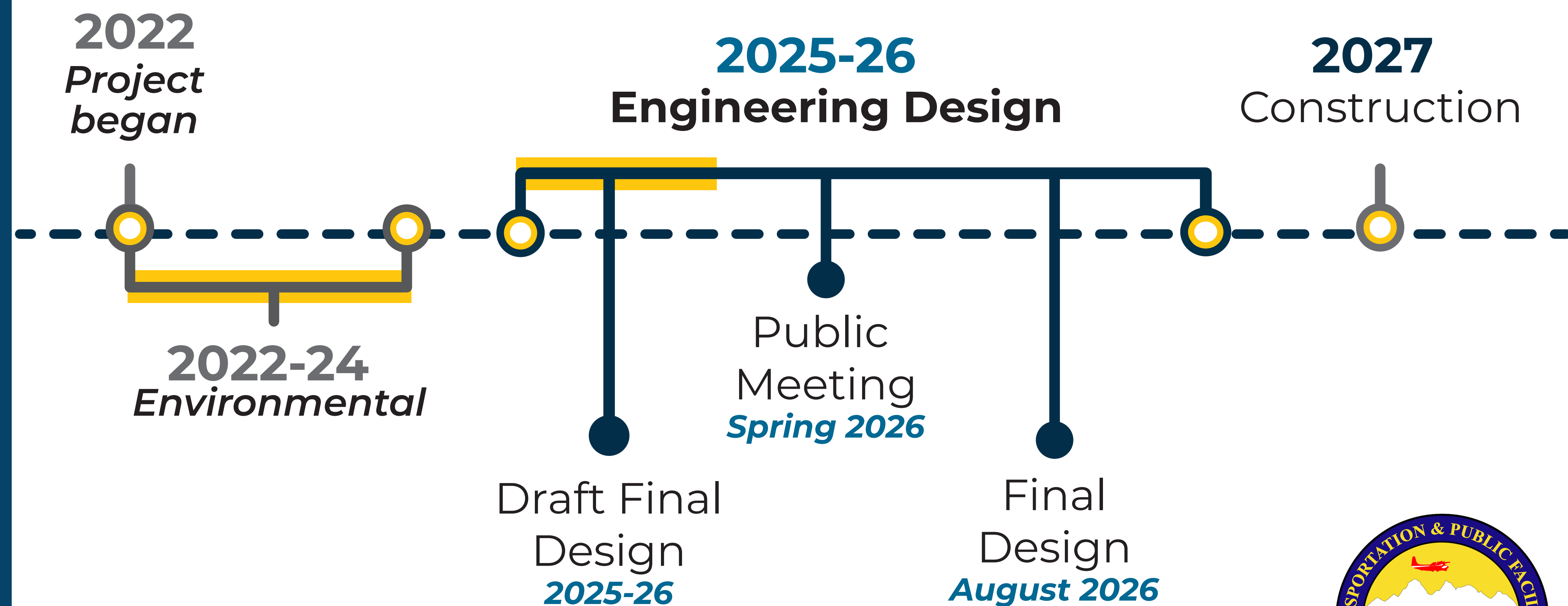
ABOUT THE PROJECT

ABOUT THE PROJECT

The Alaska Department of Transportation and Public Facilities (DOT&PF), in cooperation with the Federal Highway Administration, proposes to install a median barrier along 5th Avenue between Concrete Street and the couplet of 5th and 6th Avenues in Anchorage (Karluk Street).

The Project aims to improve safety primarily by reducing the number of mid-block pedestrian crashes, with the end goal of improving pedestrian safety in a timely and cost-effective manner.

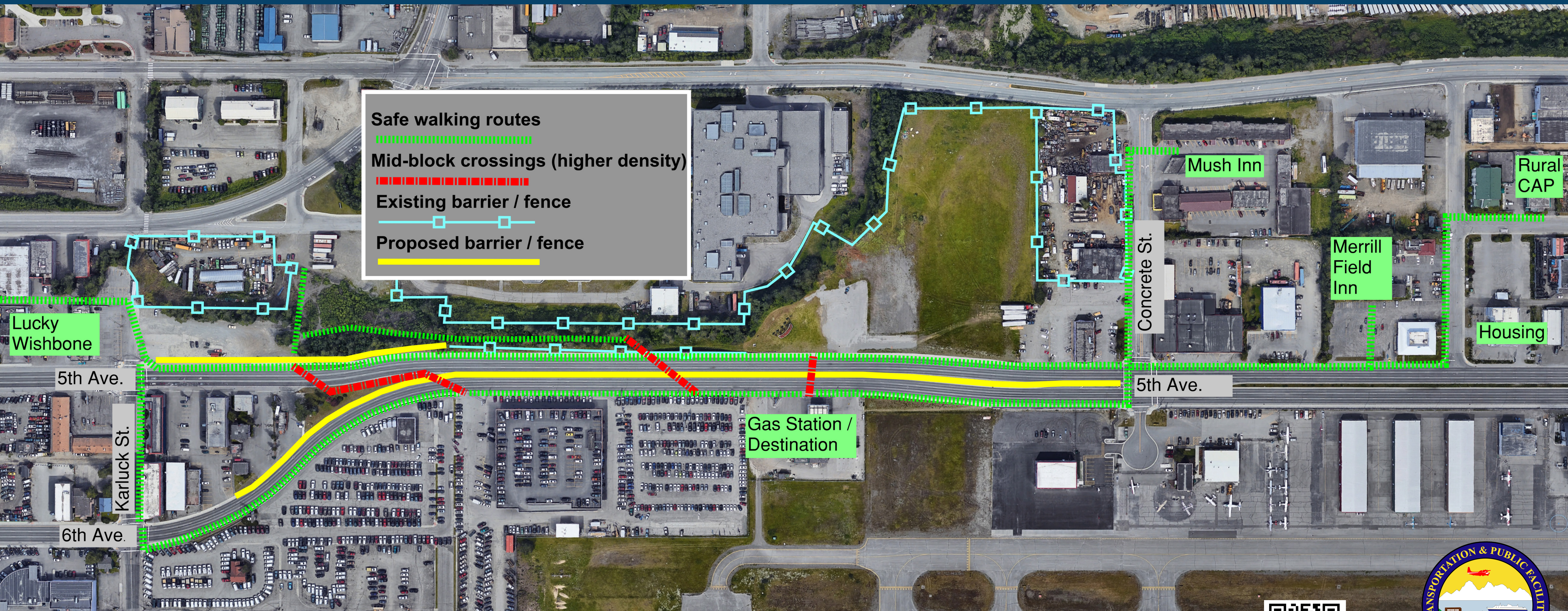
The Project began in 2022; it underwent environmental review and draft design through 2024. We are currently advancing a draft final design.



WHY DOES THE BARRIER MAKE 5TH AVENUE SAFER?

The median barrier will encourage people to use the convenient, designated street crossings. This approach has proven effective in other states. According to the Federal Highway Administration, mid-block crossings contribute to about 75% of pedestrian fatalities¹.

Most pedestrian traffic in the Project area originates on the northern side of 5th Avenue near Karluk and Concrete Streets, but people are not consistently using the existing safe crossing areas.



MEDIAN DESIGN SAFETY CRITERIA

Median Design Limitations

In order to receive funding, any option chosen must be crash tested according to the American Association of Highway and Transportation Officials *Manual for Assessing Safety Hardware* (MASH) and approved by FHWA to help ensure that it meets high safety standards.

These safety standards limit the available design options. We must also consider maintenance ease and cost. We'd like your help in selecting the preferred design from the available options.

Some of the MASH and other safety criteria that must be included in the design are:

- **Barrier and anything attached** (such as a fence) must meet MASH standards
- **Height** must be a minimum of 50 inches tall
- **Textures / patterns / images** in the concrete will be limited in depth, length, and coverage limits
- **Patterns** will have to consider if they could allow a vehicle tire to grab and advance over the barrier (e.g., stair step)
- **Any gaps, slots, or grooves** will have limited widths to preserve the structural integrity



HELP US PICK A MEDIAN DESIGN

HOW TO SHARE YOUR FEEDBACK

Using the MASH criteria, the team has developed five barrier design options. Please share your preference on the design structure, then give us your input on the color and pattern options.

Tell us what you think using the stickers



I like it



I can live with it



No, thank you

BARRIER OPTION #1

Leave us your feedback!

Place a sticker to share your preference on this barrier option.



Bronx Whitestone Median Barrier Extension Bridge Rail (Proprietary)



I like it



I can live with it



No, thank you

- **An all-steel structure**
- **No color options** because it is an all-steel structure
- **Difficult to maintain** and may be damaged during snow plowing

BARRIER OPTION #2

Leave us your feedback!

Place a sticker to share your preference on this barrier option.



Chain-Link Fence on Concrete Barrier

- **A 72-inch-high chain-link fence** attached to the top of a 32-inch-high concrete barrier
- **Chain-link fence** is available in brown, black, green, blue, and gray
- **Concrete barrier** can be colored or patterned as outlined in the design variations posters



I like it



I can live with it

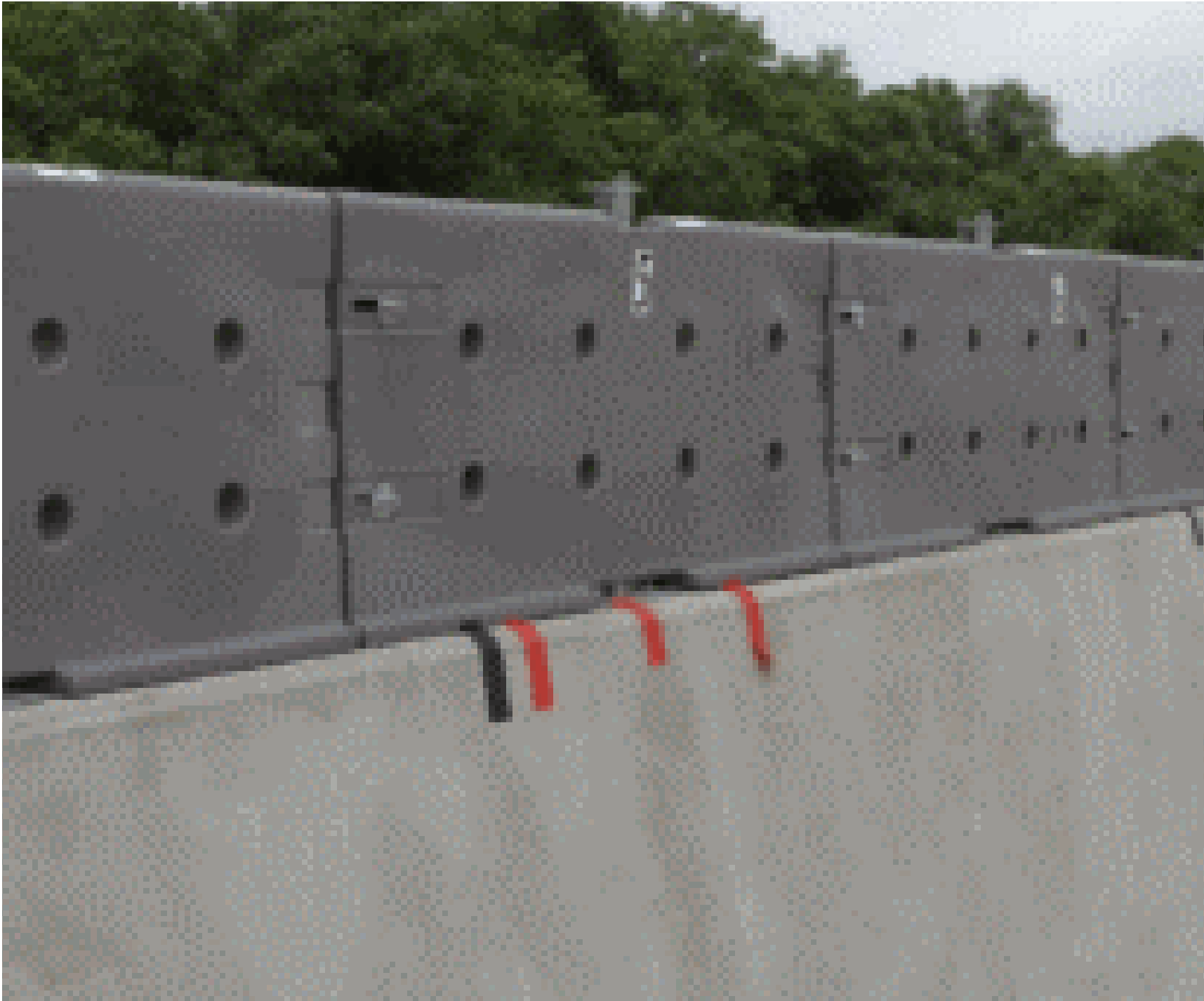


No, thank you

BARRIER OPTION #3

Leave us your feedback!

Place a sticker to share your preference on this barrier option.



Armorcast® Gawk Screen on Concrete Barrier (Proprietary)

- **Screen is lightweight polyethylene** with UV inhibitors attached to a concrete barrier
- **Armorcast portion** of the barrier is gray
- **Concrete barrier** can be colored or patterned as outlined in the design variations posters



I like it



I can live with it



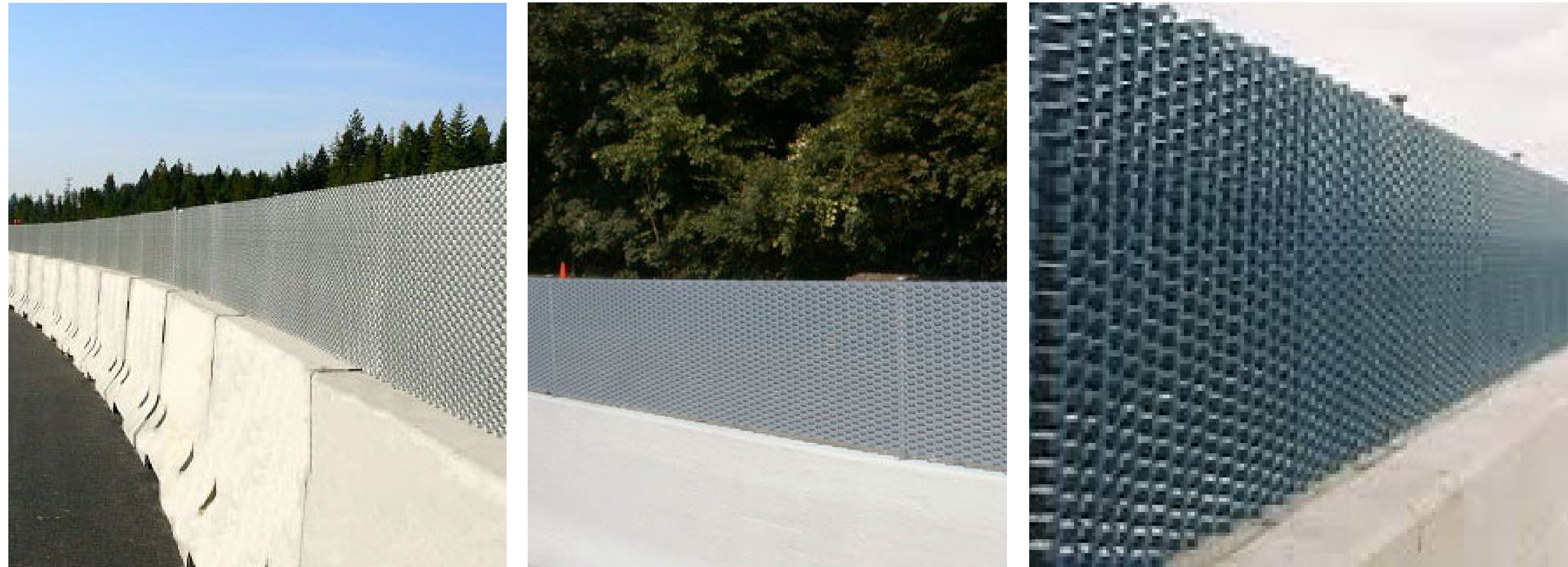
No, thank you



BARRIER OPTION #4

Leave us your feedback!

Place a sticker to share your preference on this barrier option.



Screen-Safe® Glare Screen on Concrete Barrier (Proprietary)

- **Screen is a steel attachment** onto a concrete barrier
- **Screen-Safe attachment** is available in gray, white, blue, and green color options
- **Provides glare reduction**
- **Concrete barrier** can be colored or patterned as outlined in the design variations posters



I like it

I can live with it

No, thank you

BARRIER OPTION #5

Leave us your feedback!

Place a sticker to share your preference on this barrier option.



50-Inch-Tall Concrete Barrier

- **Barrier is a 50-inch-tall** concrete barrier
- **Concrete barrier** can be colored or patterned as outlined in the design variations posters



I like it



I can live with it



No, thank you

DESIGN VARIATIONS: MAINTENANCE CONSIDERATIONS

The options provided in the Concrete Color and Pattern poster were selected based on their alignment with the safety requirements and availability.

If a segment of the barrier incurs damage and that section needs to be replaced, it will be replaced with a plain concrete barrier.

TREATMENT	ADVANTAGES	CHALLENGES
Concrete Patterns / Imprints	<ol style="list-style-type: none"> 1. Adds visual interest beyond color 2. Can reflect community themes or aesthetics 	<ol style="list-style-type: none"> 1. Designs will degrade over time 2. Usually must be cast in individual, 12.5-foot-long sections. 3. Joints between sections may require more maintenance
Colored Concrete	<ol style="list-style-type: none"> 1. Durable long-term appearance 2. Can be molded in continuous sections, creating a stronger and more uniform barrier 3. Unlikely to distract drivers 	<ol style="list-style-type: none"> 1. Limited color palette
Concrete Texture / Surface Finish	<ol style="list-style-type: none"> 1. Can provide design beyond color 2. Some textures can be continuous 3. Generally low maintenance and not visually distracting 	<ol style="list-style-type: none"> 1. Some textures require individual casting of barrier sections 2. Design durability varies depending on the texture used



DESIGN VARIATIONS: CONCRETE COLOR AND PATTERN

Using the comment cards, please share your preferences for the pattern and color of the concrete portion of the barrier design.

Have you seen other concrete designs you'd like DOT&PF to evaluate and consider? Examples might include other texture or imprint patterns. Designs must meet the safety requirements, but DOT&PF can assess your ideas against those requirements. Share your ideas, and we will evaluate them.

Concrete Color Options



TERRACOTTA



CHARCOAL



SAND



PINK SPECKLED



CLAY



TAN

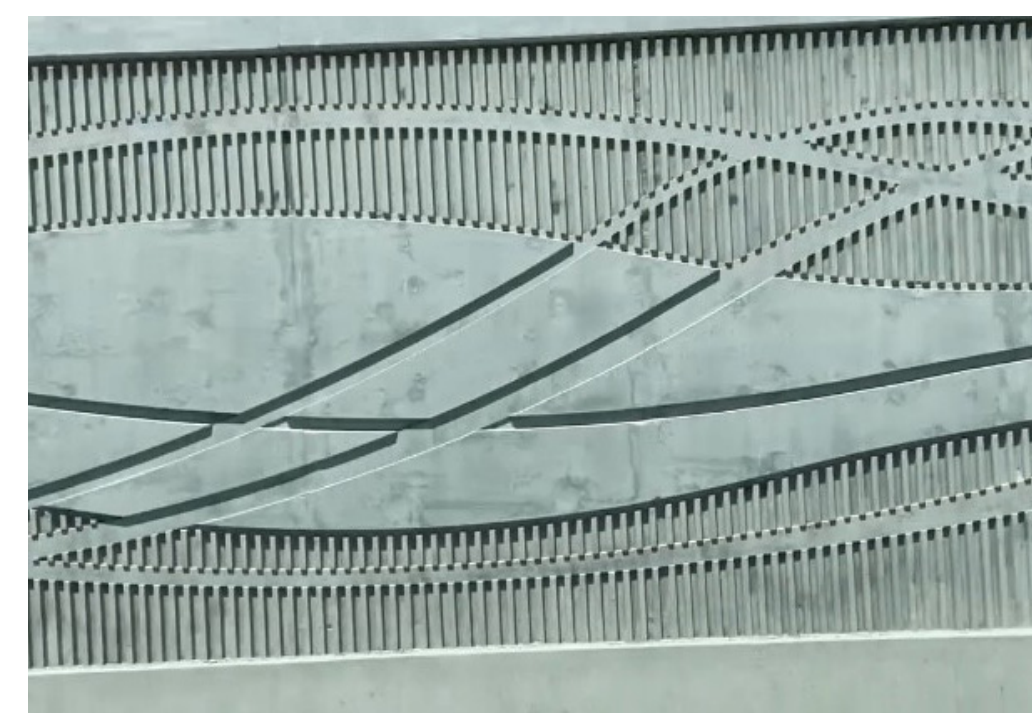


DOVE GREY



WHITE SPECKLED

Concrete Design Options Known to Meet Safety Requirements



IMPRINTS



RIVER ROCK

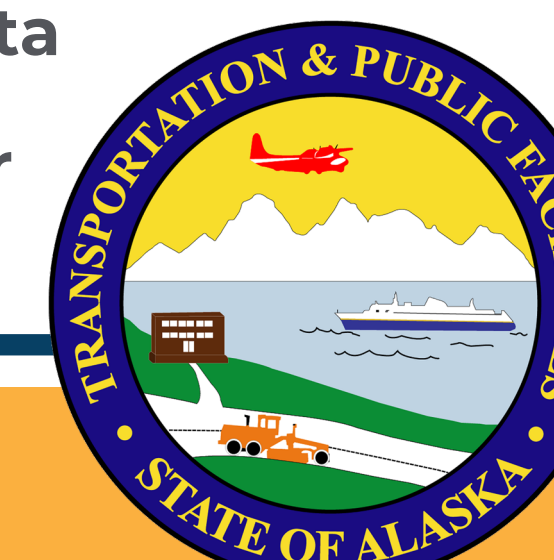


ARCHES



TEXTURE

On Minnesota Drive along Westchester Lagoon



CONTACT US

Sign up for our mailing list

to stay up to date and involved in the Project's progression!



SIGN-UP FOR E-MAILS

Receive meeting notices, project announcements, and other up-to-date information in your inbox!



EMAIL US DIRECTLY

E-mail the project team directly.
Connect@5thAvePedSafety.com



LEAVE A COMMENT

Leave a comment using forms available here tonight or use the QR code (at left) to submit them electronically.



PROJECT INFORMATION

For general Project information, please visit our website at:
5thavepedafety.com



5thavepedafety.com | Connect@5thAvePedSafety.com

